

# What Should I Learn in AI?

*As an Integration Developer*

**A Practical Roadmap**

# Three Core Focus Areas

01

---

**Building Basic AI Knowledge**

02

---

**Increasing Your Productivity**

03

---

**Building the Right Skills for the Enterprise**



# Core AI Knowledge



**Machine Learning**



**Deep Learning**



**Natural Language Processing**



**Computer Vision**



**Reinforcement Learning**



**Retrieval-Augmented Generation  
Generation (RAG)**





# Foundational AI Skills

## Model Selection

- Cloud hosts
- Local using Ollama or LM Studio Studio

## Prompt Engineering

No bad AI, only bad prompt

## Context Engineering

Broader look at overall outcome

## Agentic Skills

- Protocols (MCP and A2A)
- Agents

# My Approach: YouTube

Focus on 2-3 people in each area

1

General AI & Productivity

2

Latest Technology

3

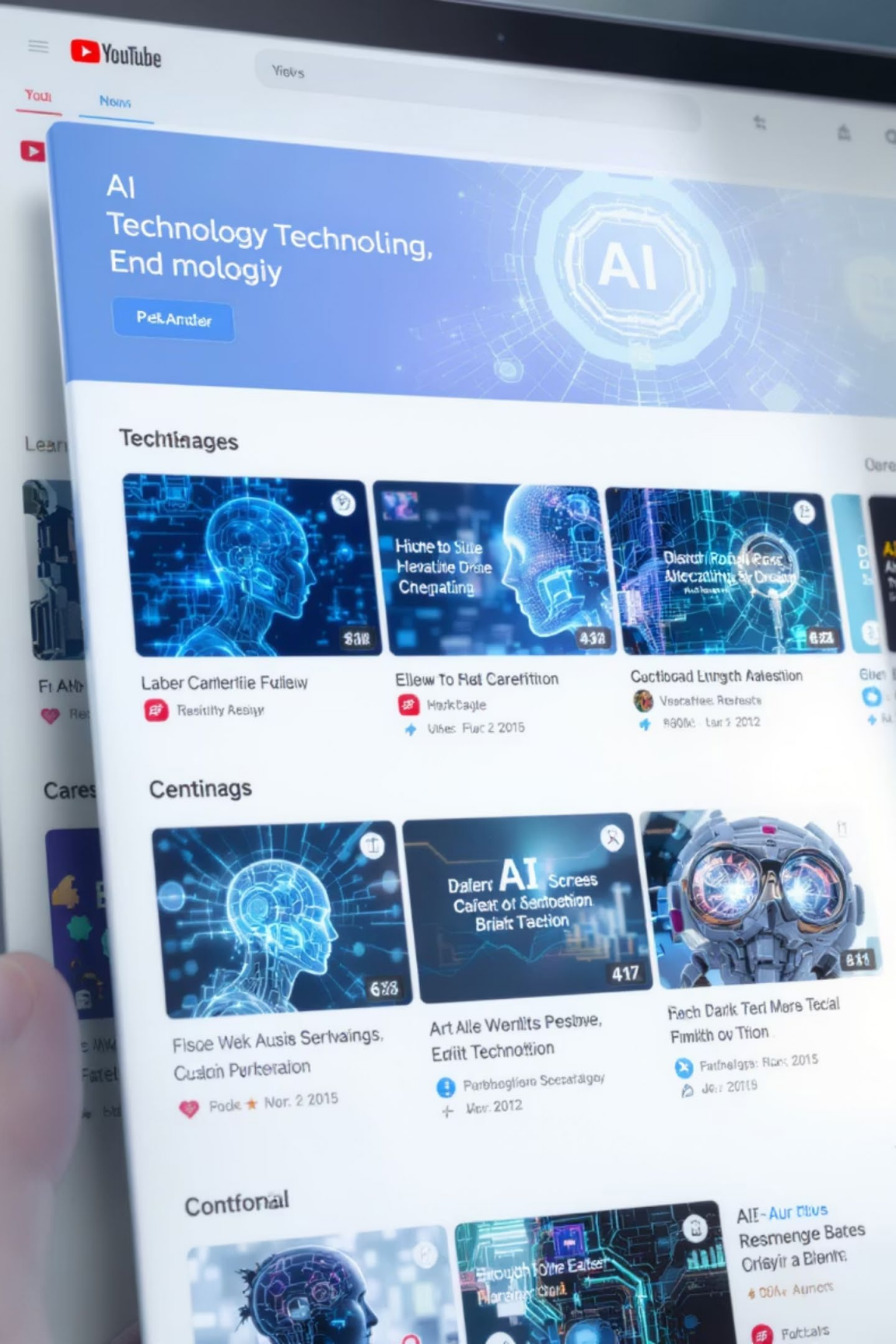
Microsoft AI

Logic Apps Agent Loop, AI Foundry,  
Foundry, OpenAI, AI Search

4

What's your passion?

Agents, Workflows, Images, Videos  
Videos







# Find What Works for You!



**Blogs**



**Videos**



**Training**

In-person or Online



**Code Examples**

Single Most Important Video

# WILL Change Your Your View of AI Forever!

Andrej Karpathy

Deep Dive into LLMs like ChatGPT







# Productivity



**If you are not using AI daily, your peers are!**



**GitHub Copilot is your friend**



**Google AI suite adds a lot of value**





# What is your Personal ROI?

01

---

Almost everything has pro/premium subscription

02

---

Determine your ROI

03

---

Set calendar reminders to cancel

04

---

Watch for super sales!



**Confidential  
Information  
Security**

# Extreme Caution

**No Personal Identifiable Information (PII)**

**Company Secrets**

# Four Skill Areas for Enterprise

# AMMA

```
graph TD; A[APIs] --- B[Microsoft]; B --- C[MCP]; C --- D[Agents];
```

The diagram illustrates a vertical stack of four concepts, each represented by a blue rectangular box with rounded corners and white text. The boxes are stacked vertically, with 'APIs' at the top, followed by 'Microsoft', 'MCP', and 'Agents' at the bottom. The boxes are connected by thin vertical lines, suggesting a flow or relationship between the concepts.

- APIs**
- Microsoft**
- MCP**
- Agents**







# Developer APIs

→ Each major LLM has an API

→ Billed separately

→ Complete control

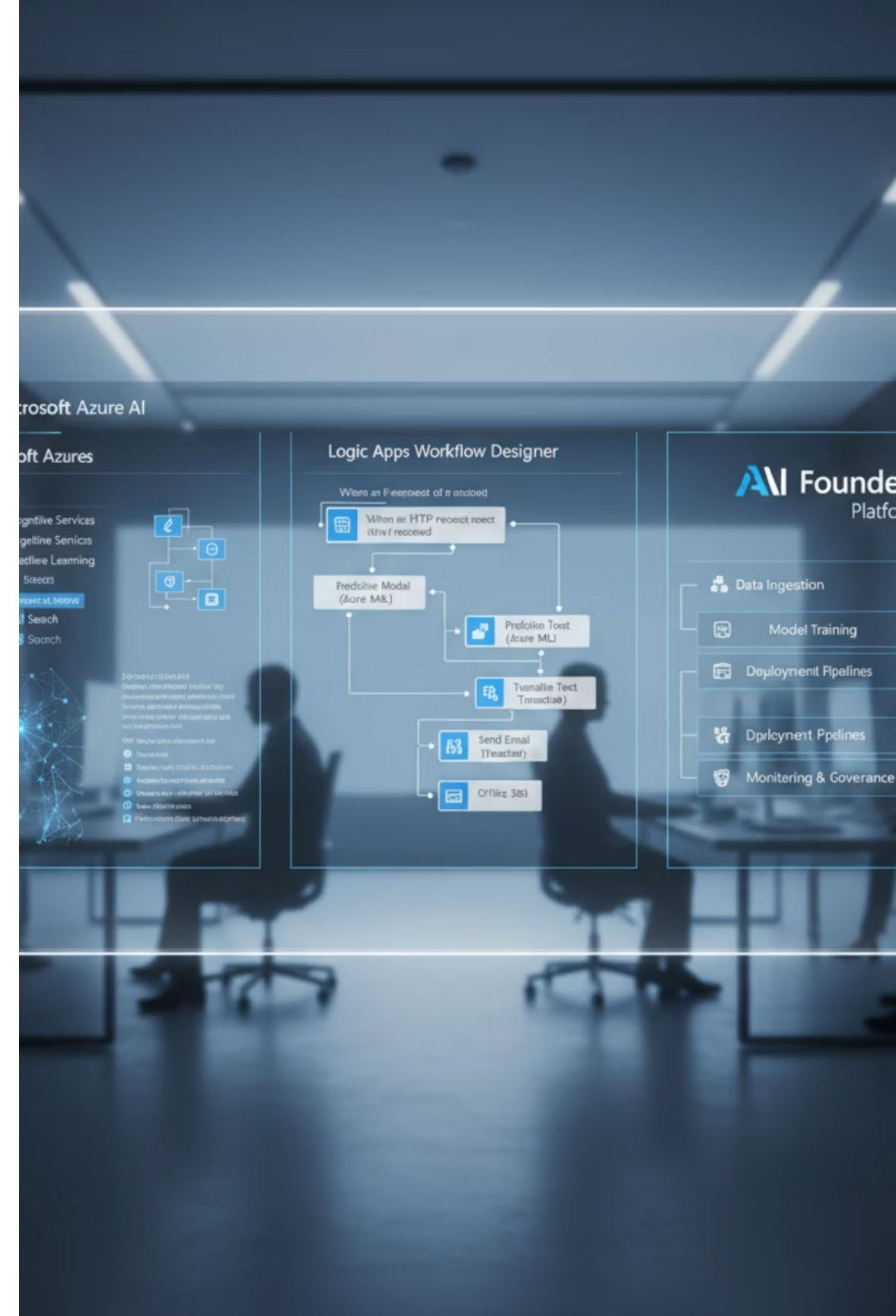
# Microsoft's Offerings

## Logic Apps

- Agent Loop, MCP, A2A, and more
- Brings Deployment and Monitoring to Agents

## AI Foundry

Trusted platform for LLMs





# Model Context Protocol (MCP)



Released November 2024 - Massive impact

1

Exposing existing services

2

Consuming value-added services



# Agents

**Completing tasks  
independently**

Like your summer intern



# Microsoft is King in the Enterprise



## Authentication

AD / Entra



## Data

SharePoint



## Communications

Office 365 / Teams

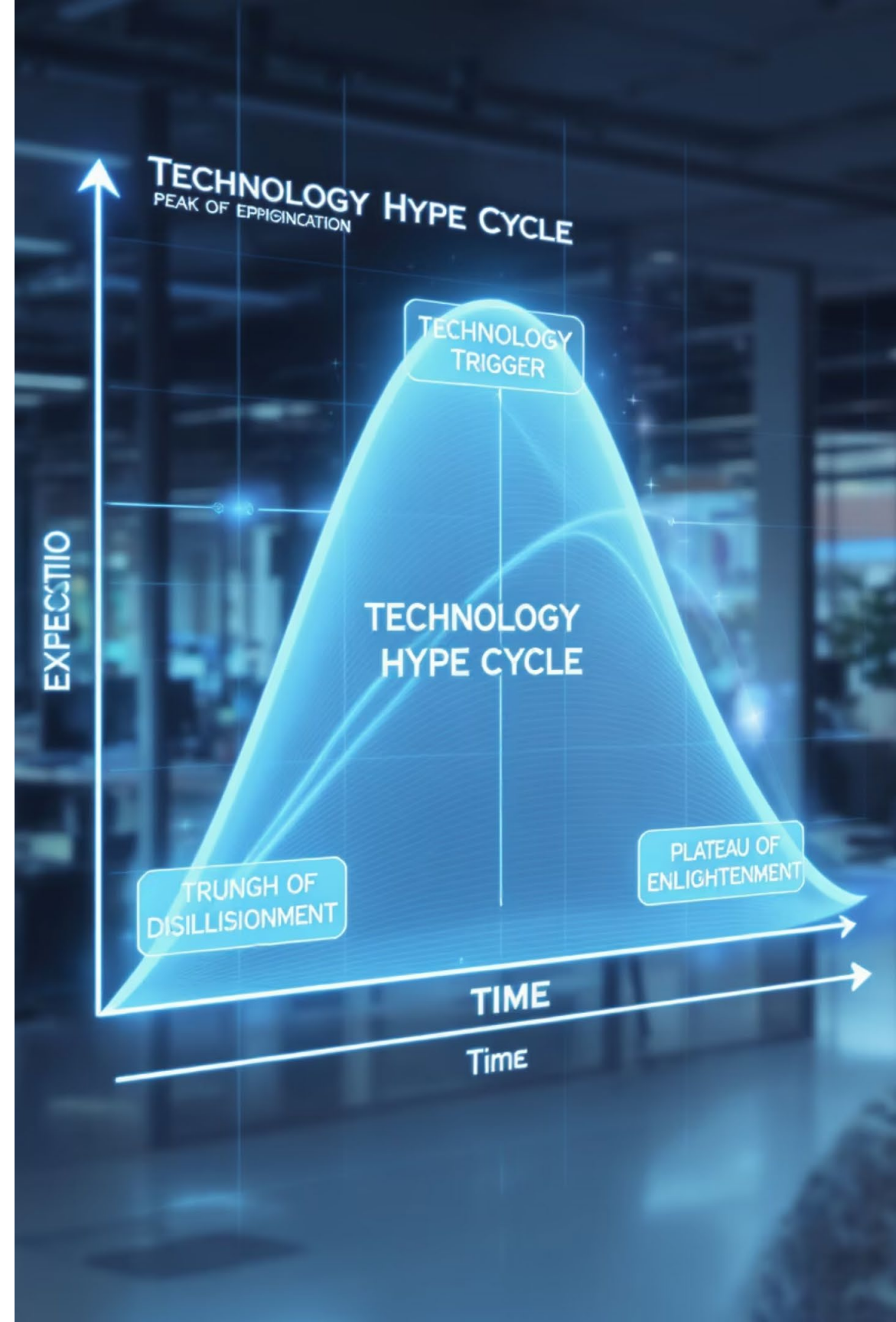




# Do Not Get Caught Up in Hype

Over-engineering

Tomorrow will always bring a "better" something







# How Do I Know If You Are Making Progress with AI?

**Rather than thinking like:**

```
XmlDocument xDoc = New  
XmlDocument();
```

**You think like:**

```
// Create XML Document  
Tab-Tab
```

# Closing & CTA



Get hands-on!



Find your passion!



Check out <https://StephenWThomas.com/Learn-AI>



Gforé  
Stane

[Home](#)

[Howser](#)

[Casunt](#)

[Leffere](#)

## Hands-On Learning

[Lear be Shon](#)

[Lear Up](#)